

# LECCIÓN 4

LA ARMADURA DE DIOS

## EL YELMO DE LA SALVACIÓN Y LA ESPADA DEL ESPÍRITU • EFESIOS 6:17 •

### 1.- MARQUE LA ALTERNATIVA CORRECTA

1.1 ¿Qué parte del cuerpo protege el yelmo?

Brazo

Pecho

Cabeza

1.2 ¿De que nos protege el yelmo de la salvación?

Dardos

Malos pensamientos

Piedras

1.3 ¿Qué hay que hacer para ser salvo?

Creer en Jesús

Pedir perdón a Jesús

Todas las alternativas

1.4 ¿Qué es la Espada del espíritu?

Sable laser

La Biblia

Excalibur

### 2.- VERDADERO O FALSO

2.1 \_\_\_ Nuestra arma en la lucha espiritual es la espada del valor.

2.2 \_\_\_ Jesús utilizo la espada del espiritu para resistir las tentaciones de Satanás.

2.3 \_\_\_ Jesus uso dos citas biblicas para responder a Satanás.

2.4 \_\_\_ Estudiando la Biblia nos preparamos para utilizar la espada del espiritu.

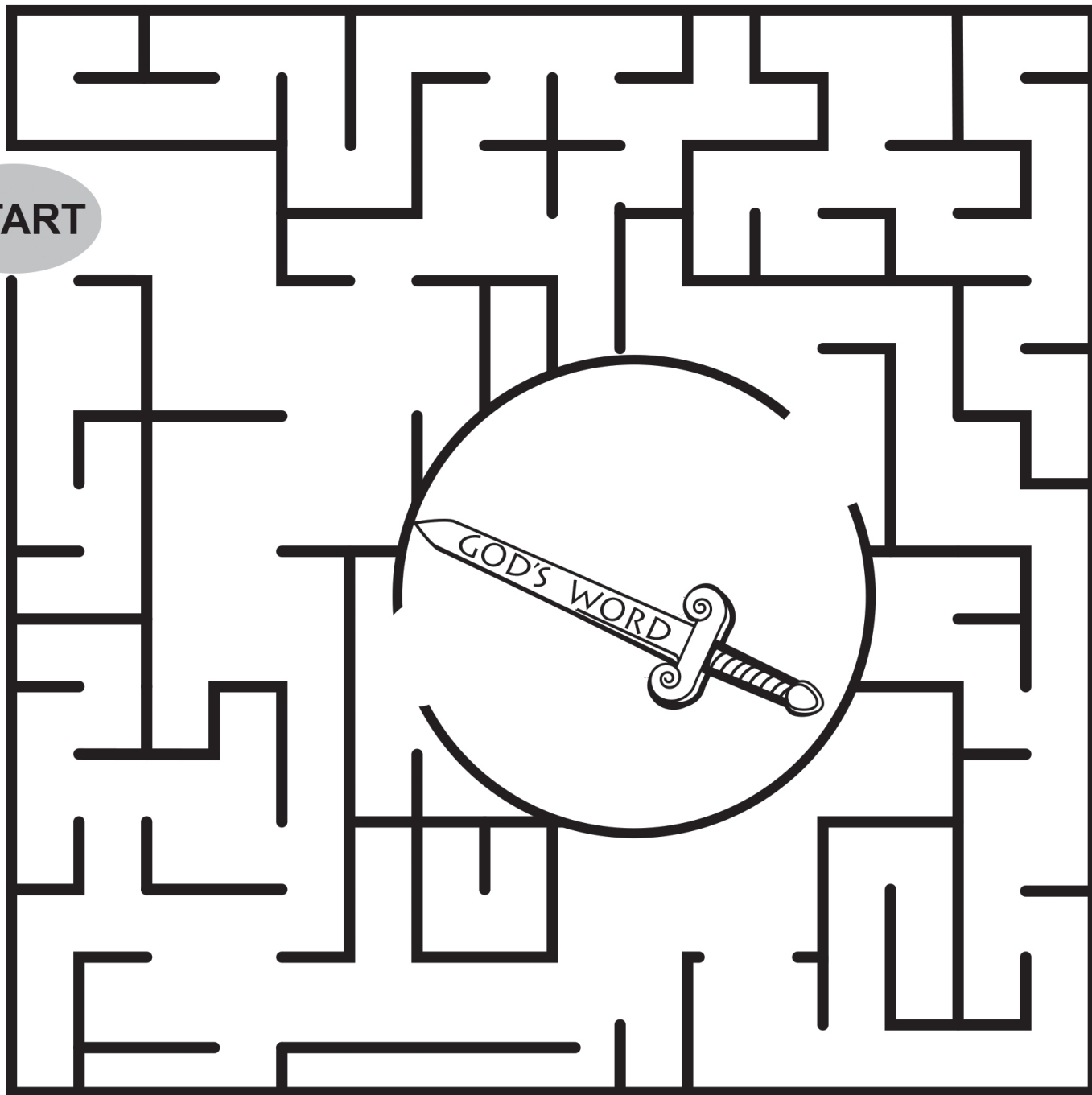
2.5 \_\_\_ El yelmo de la salvación nos protege de los malos pensamientos.

### 3.- PINTA LA ILUSTRACIÓN



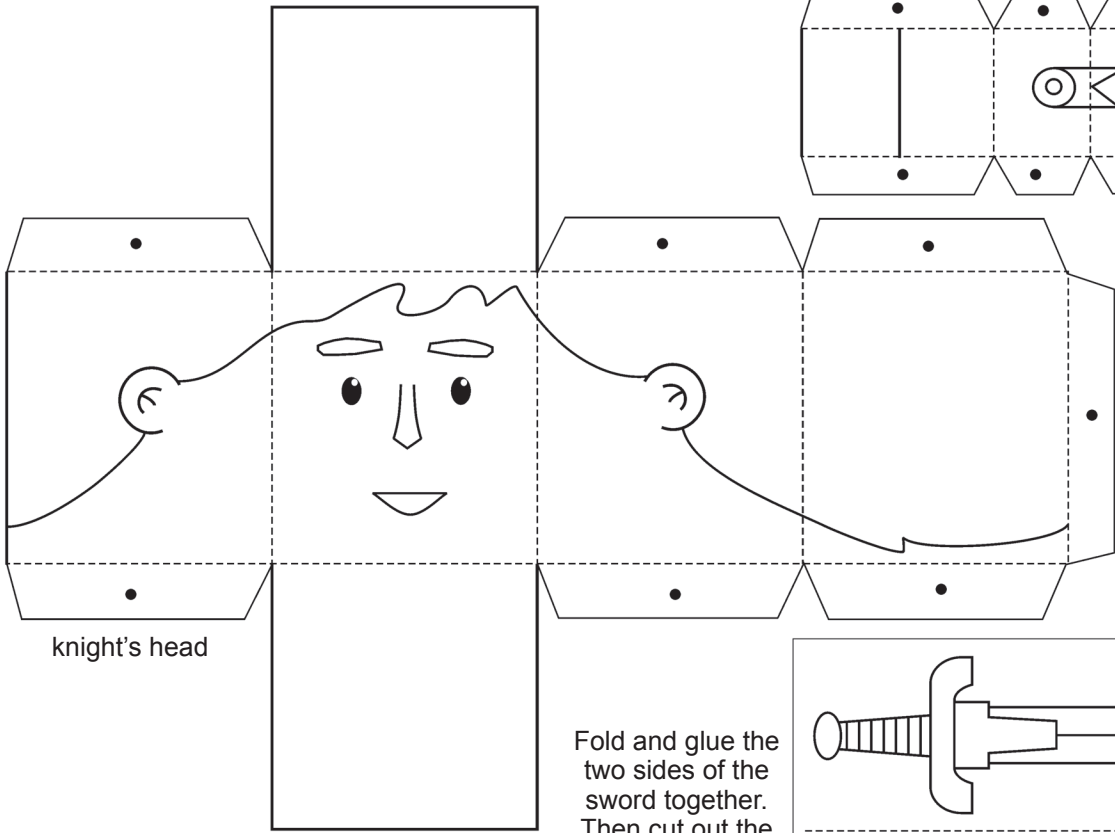
# 4.- LABERINTO

START

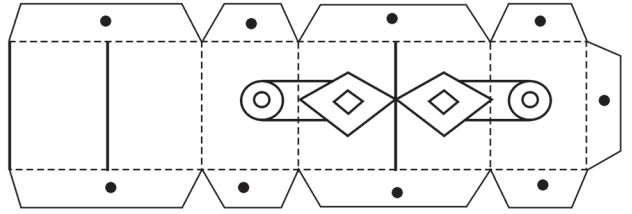


## 5.- DESCUBRE LAS 9 DIFERENCIAS



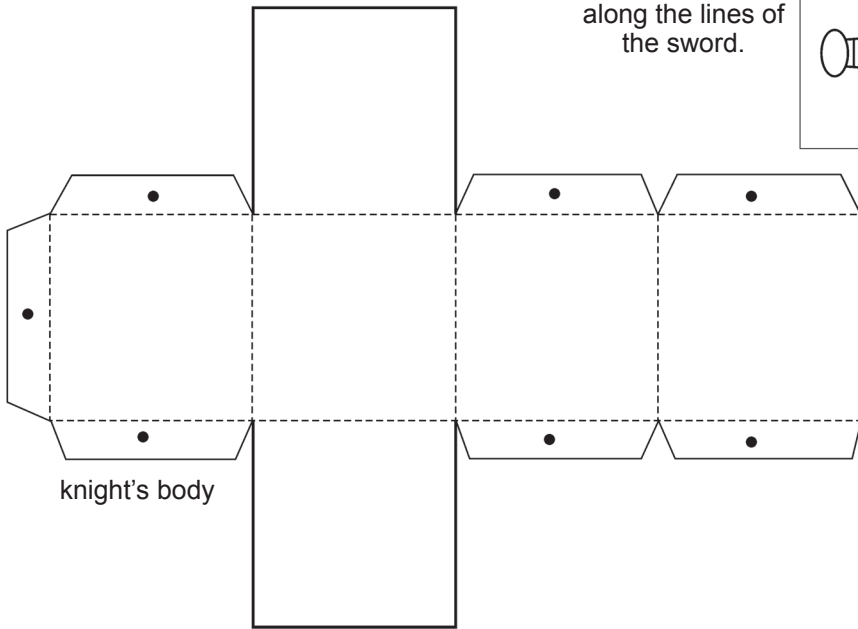
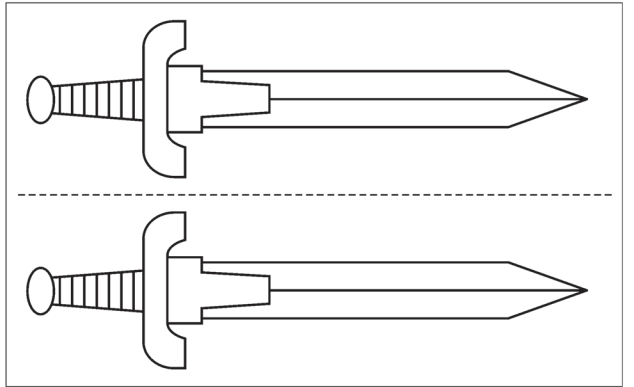


knight's head

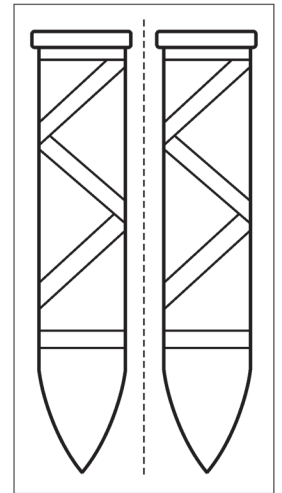


knight's legs

Fold and glue the two sides of the sword together. Then cut out the sword by cutting along the lines of the sword.

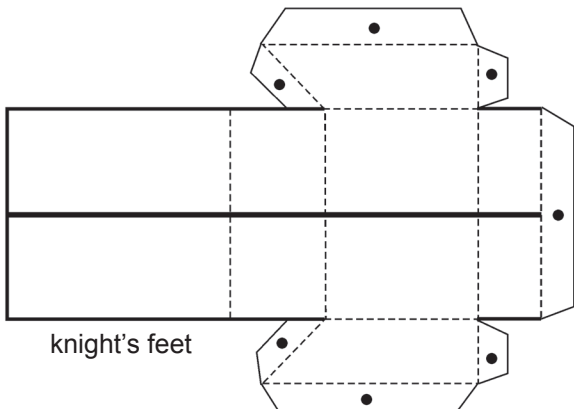


knight's body

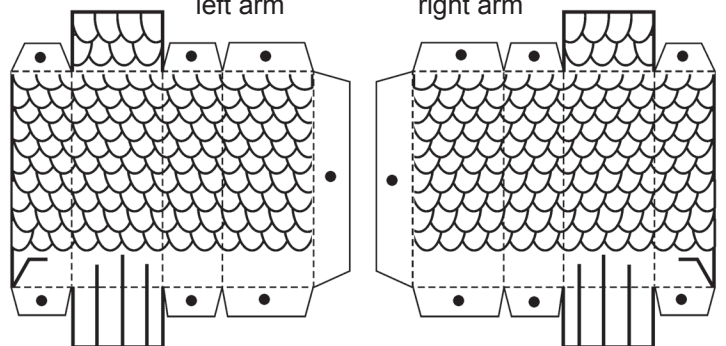


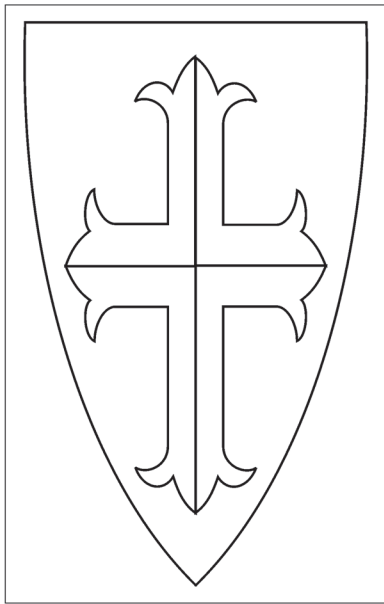
knight's left arm

knight's right arm

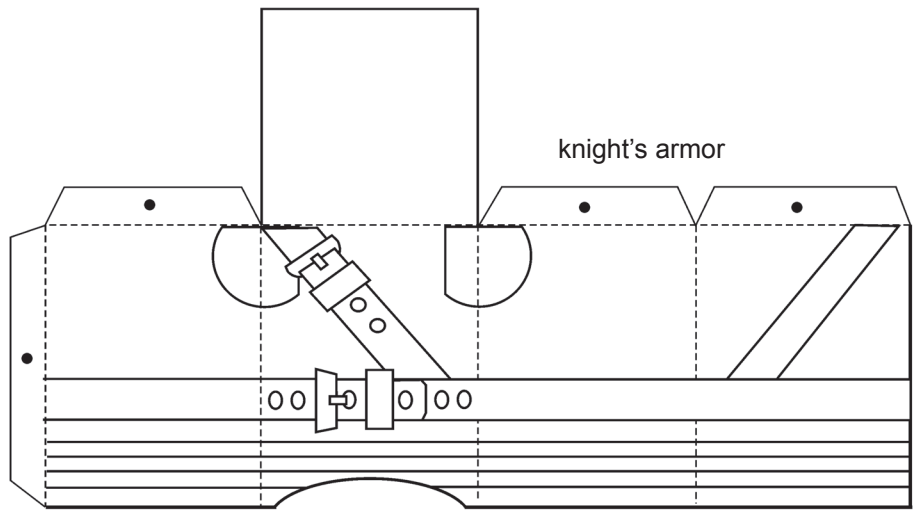


knight's feet



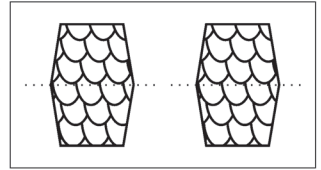


knight's shield



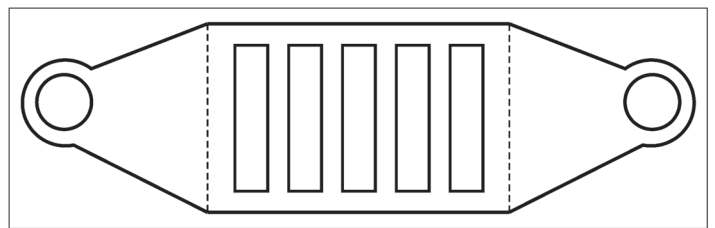
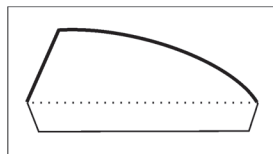
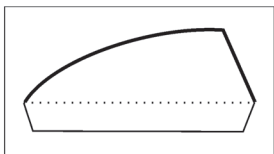
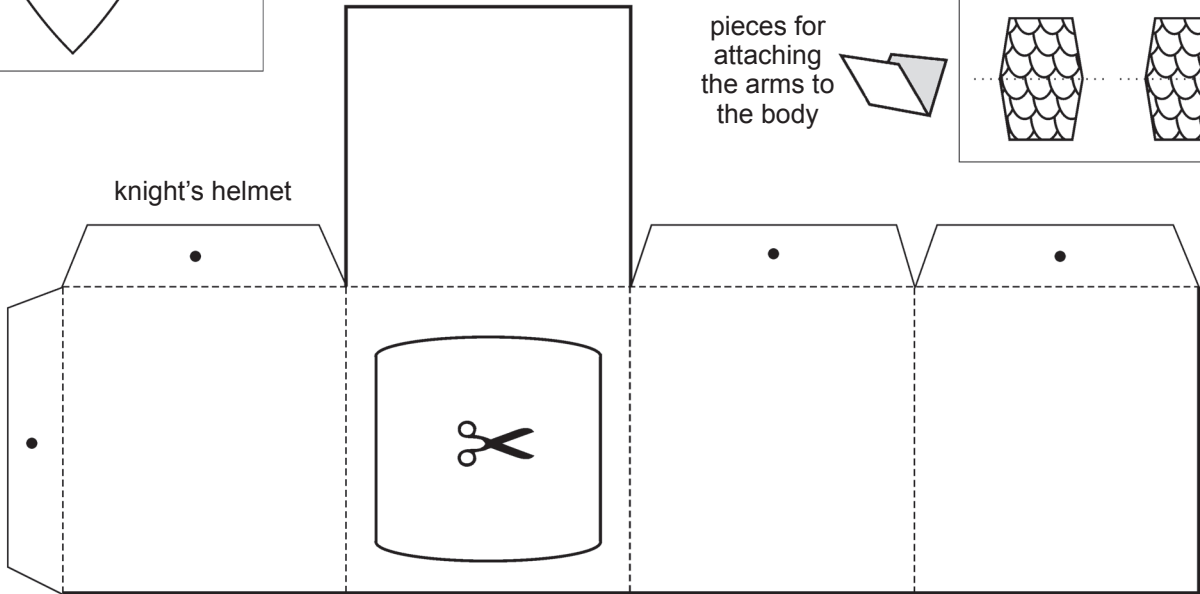
knight's armor

pieces for attaching the arms to the body

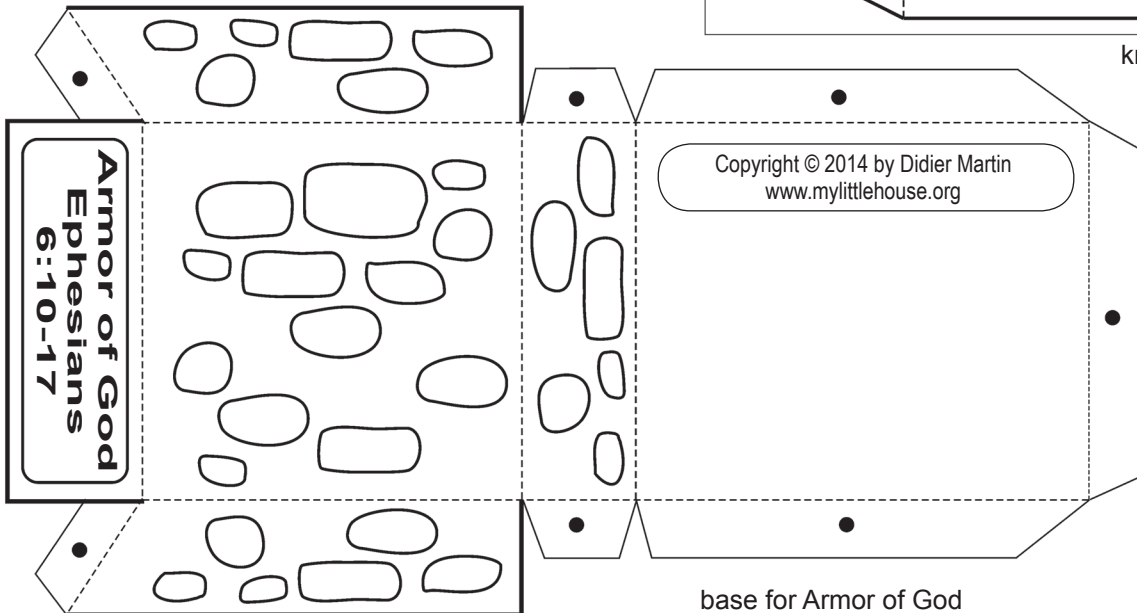


knight's helmet

tabs to attach the tuft on the helmet



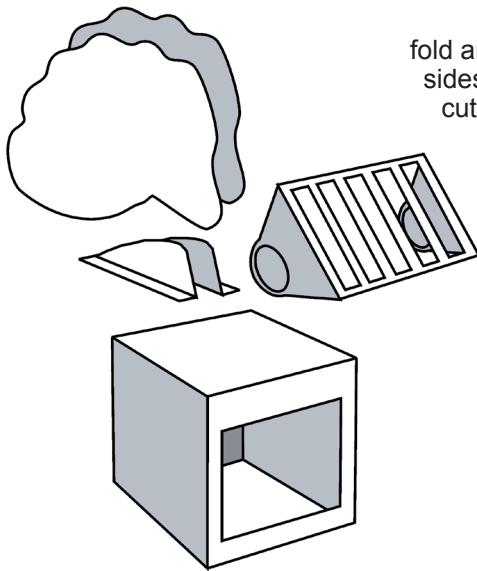
knight's helmet visor



**Armor of God  
Ephesians  
6:10-17**

Copyright © 2014 by Didier Martin  
[www.mylittlehouse.org](http://www.mylittlehouse.org)

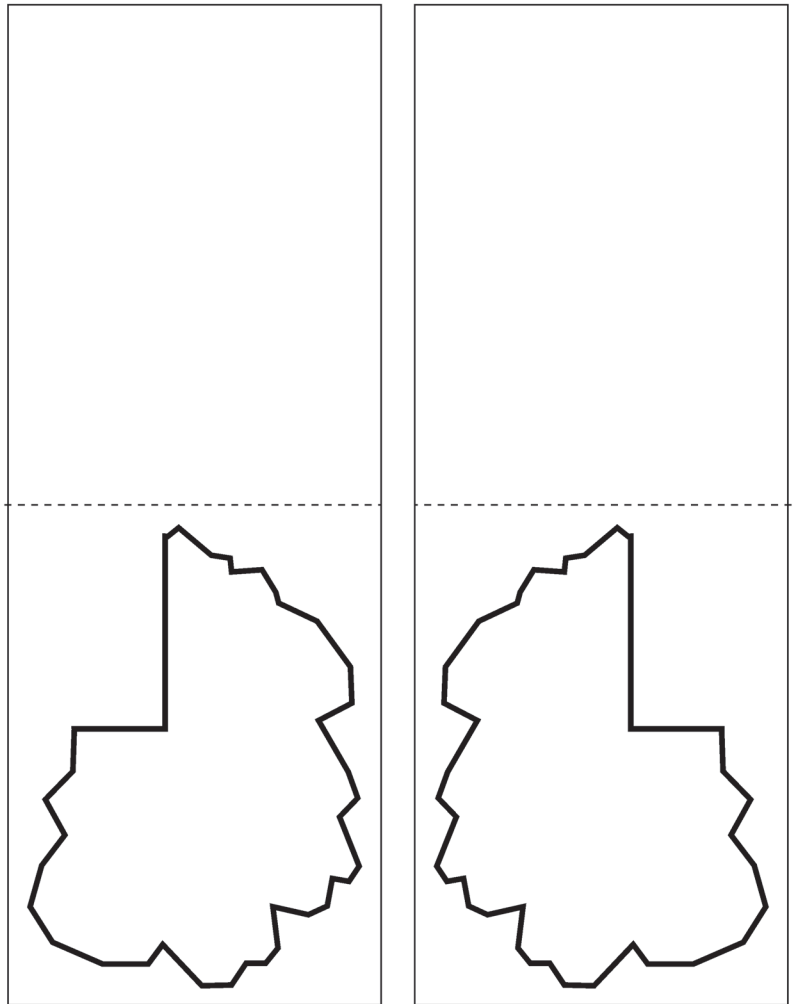
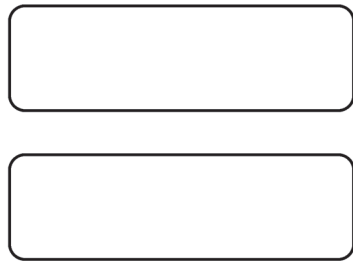
base for Armor of God



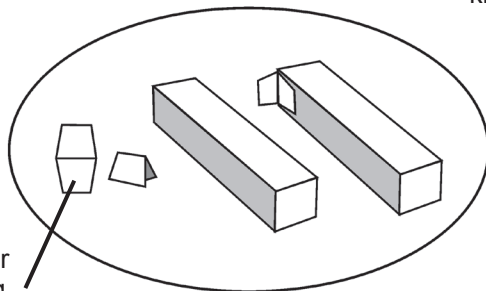
helmet tuft  
fold and glue the two  
sides together, then  
cut along the lines

**TO ADD THE CREST TO THE HELMET**  
Cut out and assemble the helmet box and visor. Cut out the two parts of the tuft. Also, cut out the two tabs for attaching the tufts found on page 3. Glue the tufts and tabs sandwiched together with the tufts in the middle. Next, glue the assembled crest on top of the helmet. See the photos on the cover for the example.

Extra tabs to use  
for the front of the  
base to write your  
own text.



**Print this page on  
regular weight paper**



pieces for  
attaching  
the arms  
to the  
body

